

# Imagine where medical device data can take you



## Current state is reactive care

With today's traditional tools, caregivers have limited insights on the current state of the patient



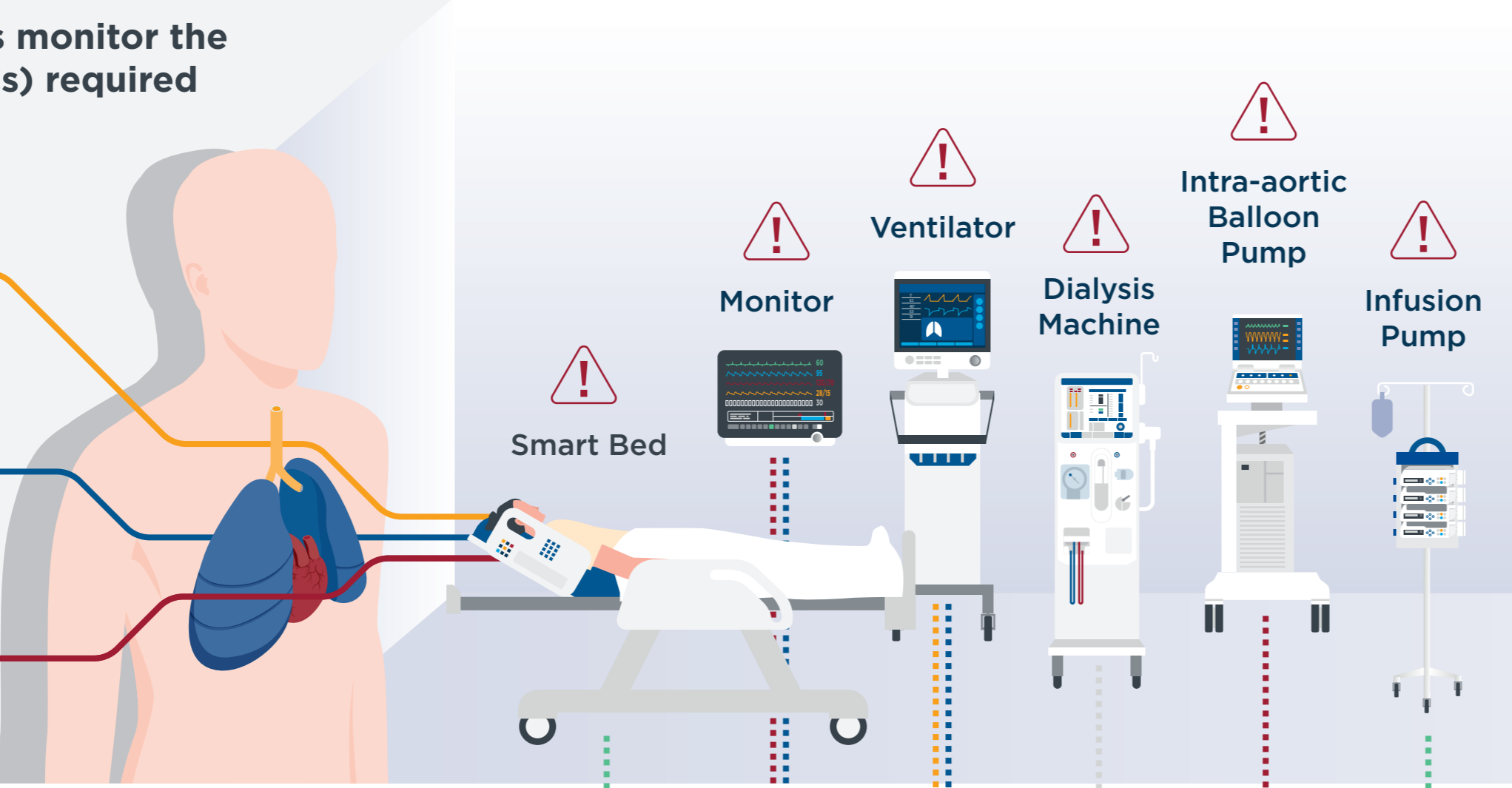
Irrelevant device alarms are a threat to patient safety

Research indicates that between **87% and 95% of alarms are non-actionable**<sup>1</sup>

- ➔ **Inefficient**
- ➔ **Fatigue inducing**

Medical devices monitor the essentials (ABCs) required to sustain life:

- Airway (A)
- Breathing (B)
- Circulation (C)



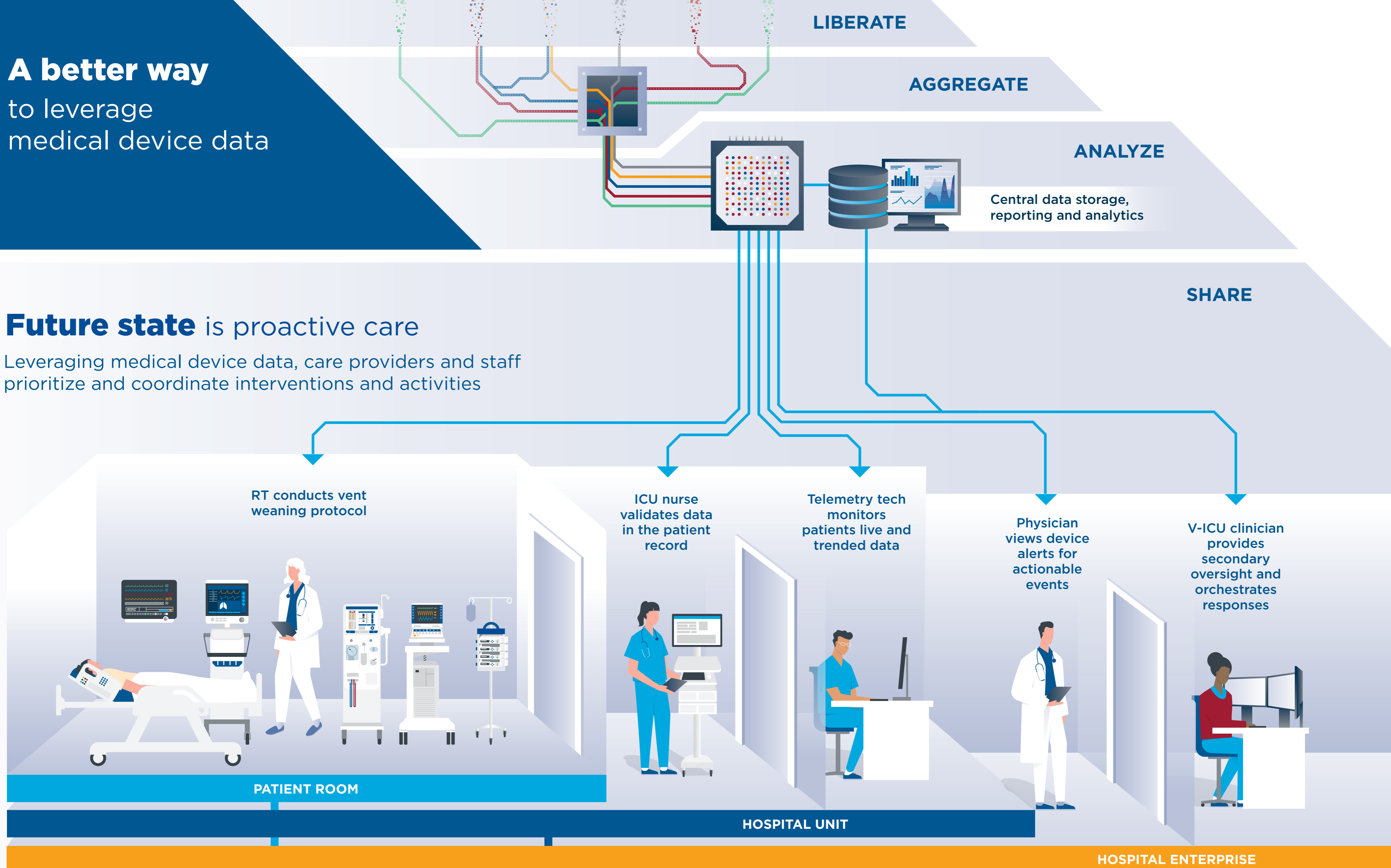
Frequent Distractions. Interruption-Driven.



## A better way to leverage medical device data

## Future state is proactive care

Leveraging medical device data, care providers and staff prioritize and coordinate interventions and activities

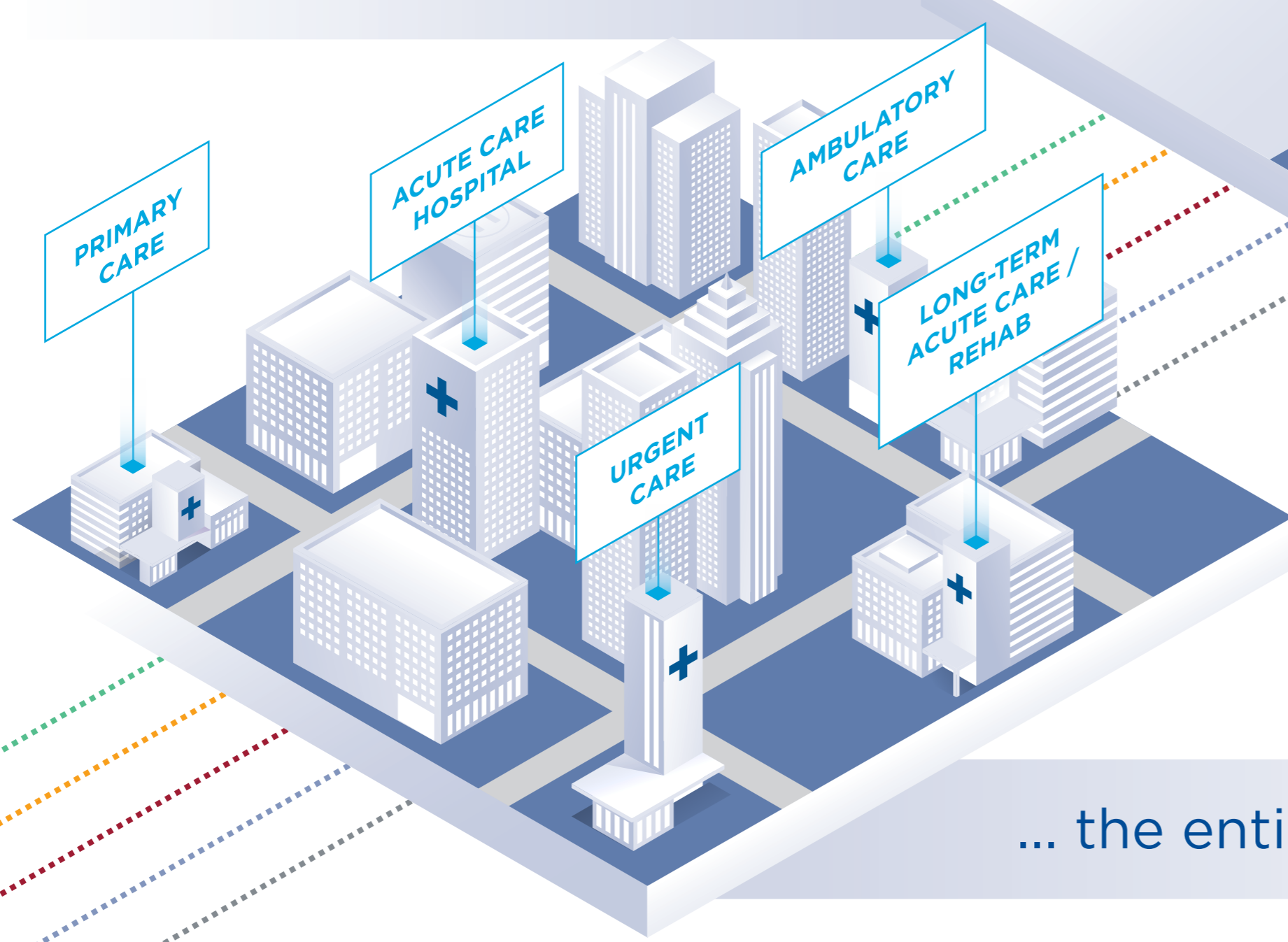


### BENEFITS

	PATIENT ROOM	HOSPITAL UNIT	HOSPITAL ENTERPRISE
<b>Caregivers</b>	↑ Caregiver attention	↑ Patient safety ↑ Caregiver safety ↓ Unnecessary visits ↓ Alarm fatigue	↓ Alarm fatigue ↑ Caregiver safety ↑ Patient safety ↑ Staff satisfaction
<b>Clinical leadership</b>	↑ HCAHPS scores	↑ Reach of staff ↑ Clinical effectiveness	↓ PPE Use ↓ ICU transfers ↓ Length-of-stay ↓ Code Blue ↑ Staff retention
<b>Patient</b>	↑ Patient satisfaction ↑ Restful patients ↓ Length-of-stay		

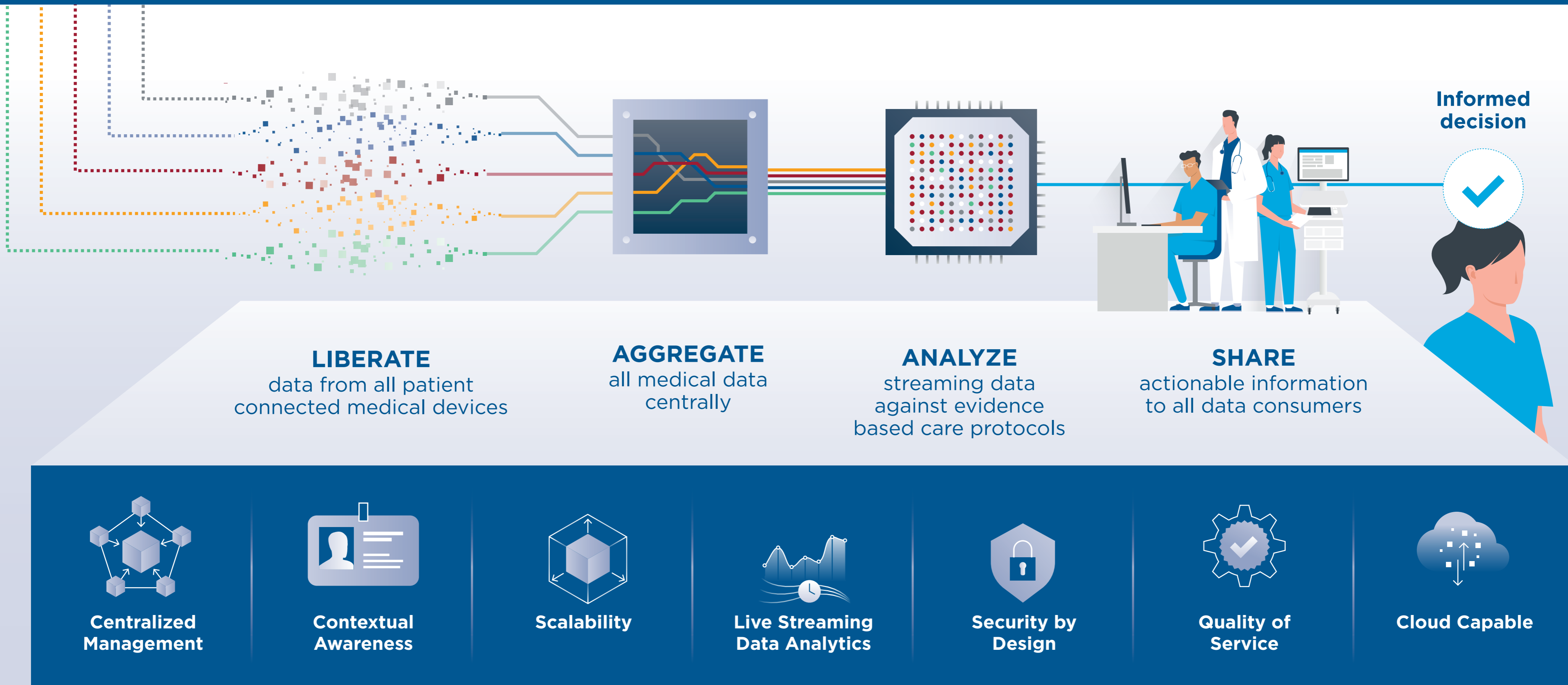
## Now imagine a single technology platform helping you achieve these benefits across...

... all hospital departments



... the entire health system

## capsule Medical Device Information Platform



**One Platform. Countless Benefits. Making the complex simple and the simple insightful.**



<sup>1</sup> Ruppel, H; Funk, M; Whittemore, R. Measurement of Physiological Monitor Alarm Accuracy and Clinical Relevance in Intensive Care Units. Am J Crit Care (2018) 27 (1): 11-21. <https://doi.org/10.4037/ajcc2018385>

MKT0359, DCN 2020-252 REV 0.0 PUBLISHED 2020-AUG



Capsule Medical Device Information Platform is an Intel® IoT Market Ready Solution (Intel® IMRS). Proven market ready solutions from Intel's partner ecosystem including Capsule can reduce the time, cost, and risk of IoT deployments—so that data can start to enhance healthcare now. Intel® technologies for healthcare IoT provide high performance for medical imaging, a foundation for connected and remote care, live, and optimized edge computing systems.