

Imagine where medical device data can take you



Current state is reactive care

With today's traditional tools, caregivers have limited insights on the current state of the patient



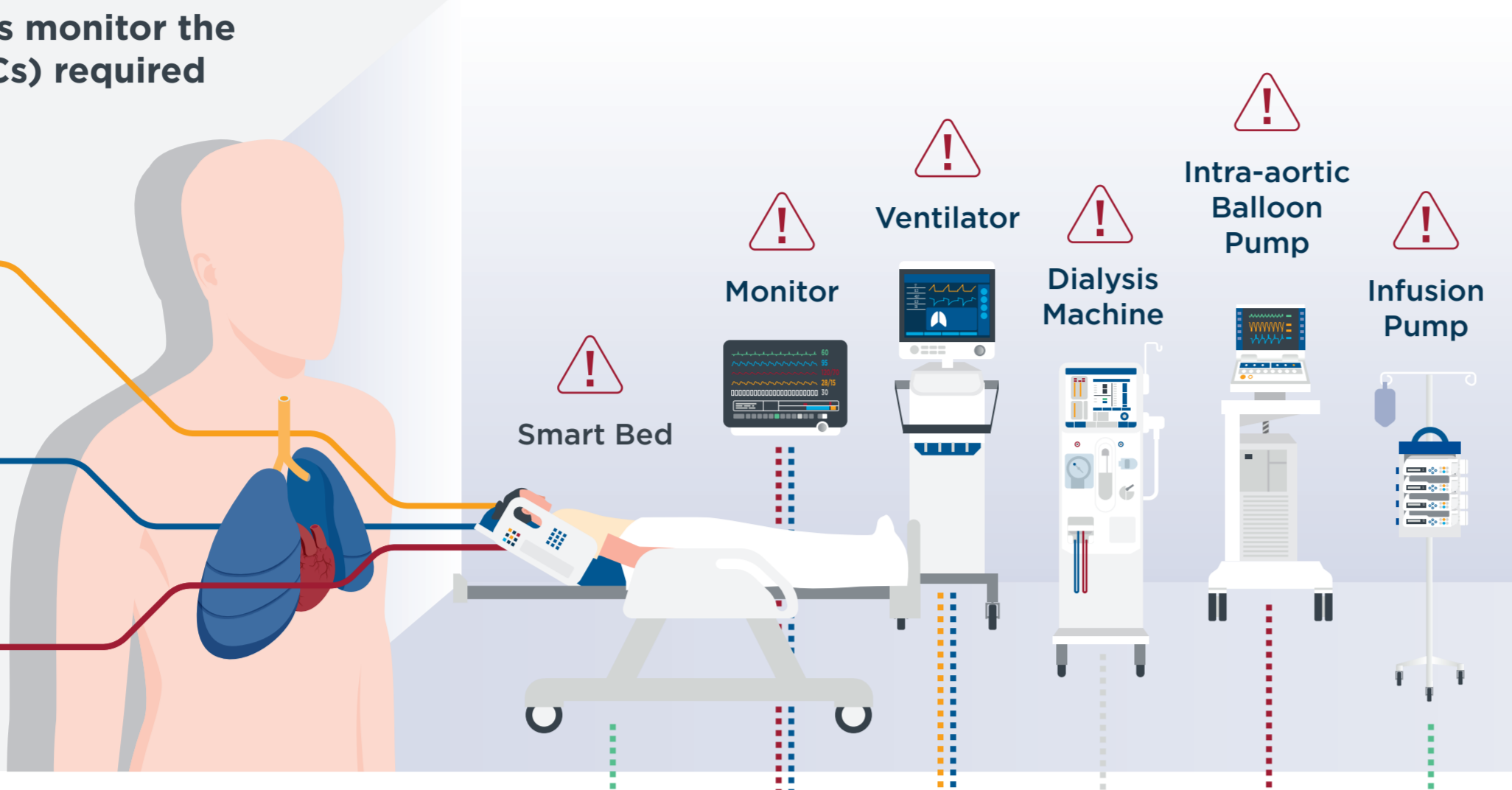
Irrelevant device alarms are a threat to patient safety

Research indicates that between **87% and 95% of alarms are non-actionable**¹

- ➔ **Inefficient**
- ➔ **Fatigue inducing**

Medical devices monitor the essentials (ABCs) required to sustain life:

- Airway (A)
- Breathing (B)
- Circulation (C)



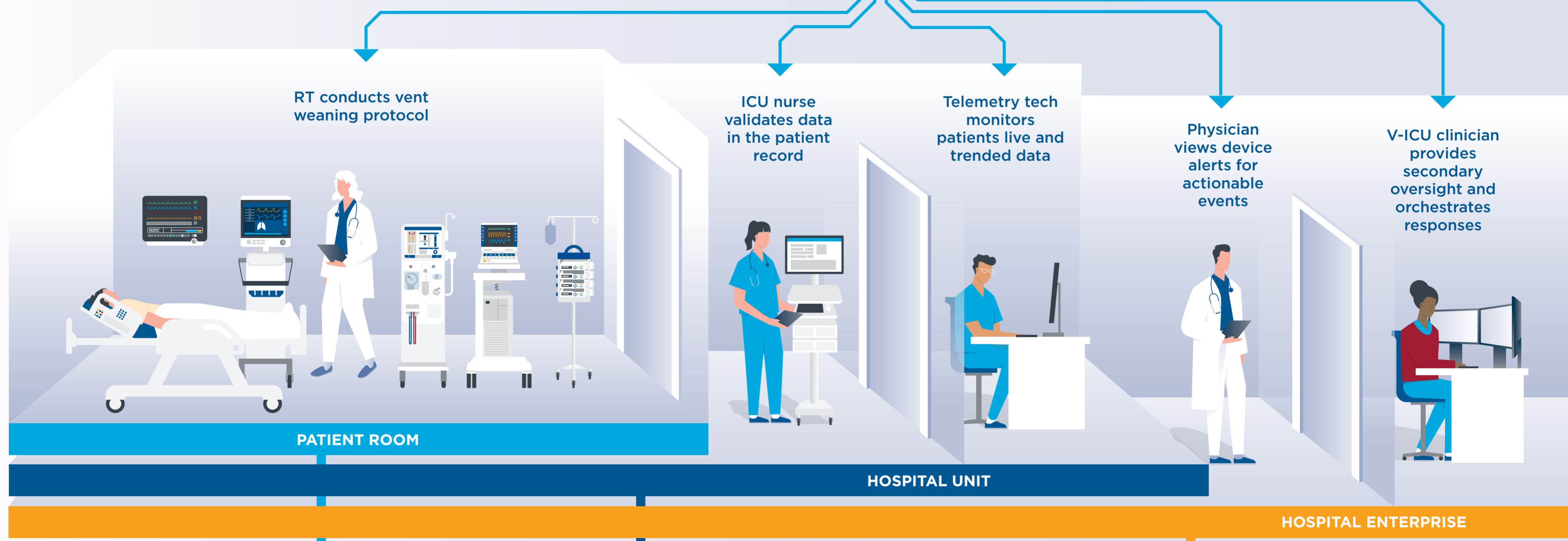
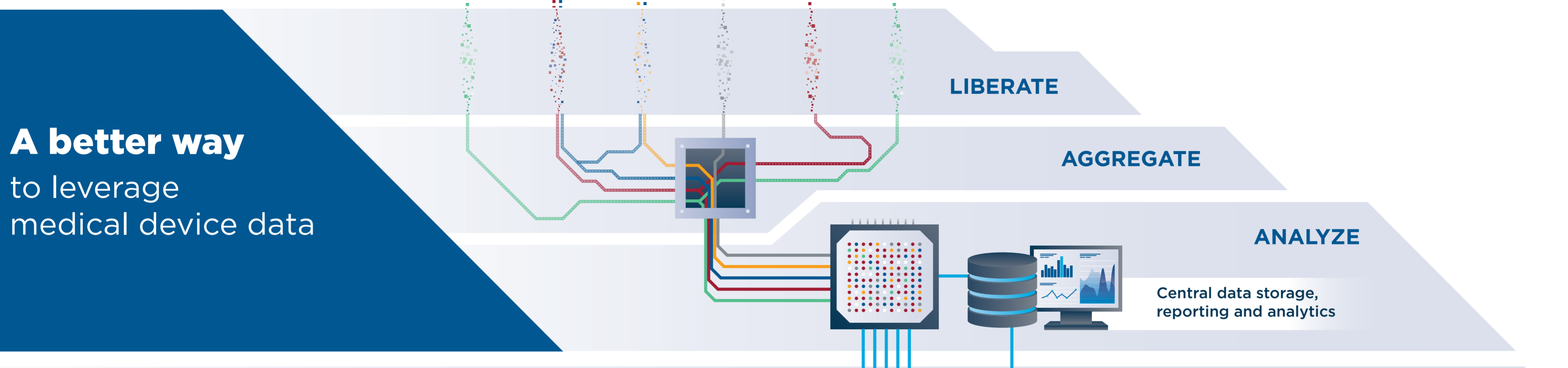
Frequent Distractions. Interruption-Driven.



A better way to leverage medical device data

Future state is proactive care

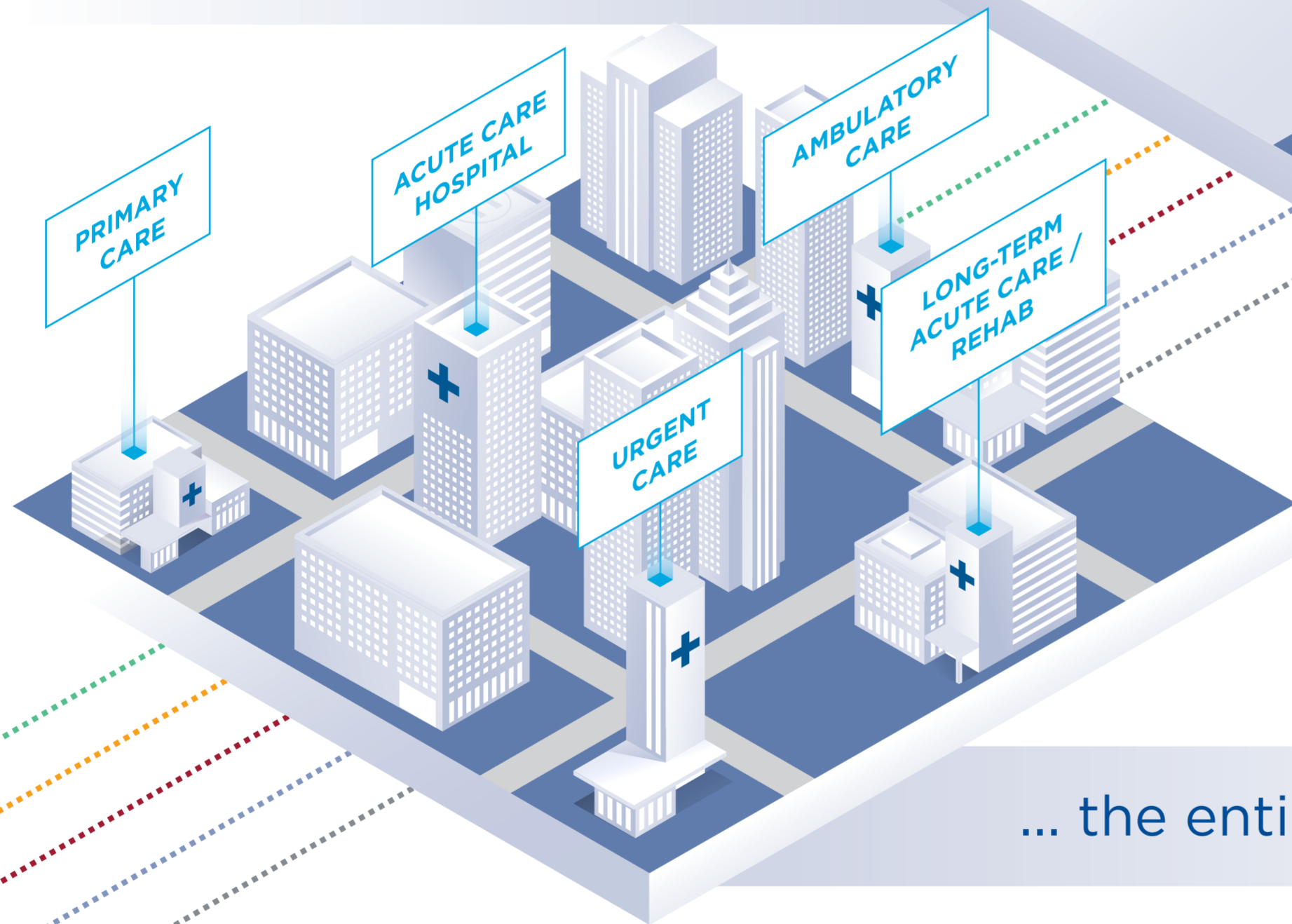
Leveraging medical device data, care providers and staff prioritize and coordinate interventions and activities



BENEFITS	PATIENT ROOM	HOSPITAL UNIT	HOSPITAL ENTERPRISE
Caregivers	↑ Caregiver attention	↑ Patient safety ↑ Caregiver safety ↓ Unnecessary visits ↓ Alarm fatigue	↓ Alarm fatigue ↑ Caregiver safety ↑ Patient safety ↑ Staff satisfaction
Clinical leadership	↑ HCAHPS scores	↑ Reach of staff ↑ Clinical effectiveness	↓ PPE Use ↓ ICU transfers ↓ Length-of-stay ↓ Code Blue ↑ Staff retention
Patient	↑ Patient satisfaction ↑ Restful patients ↓ Length-of-stay		

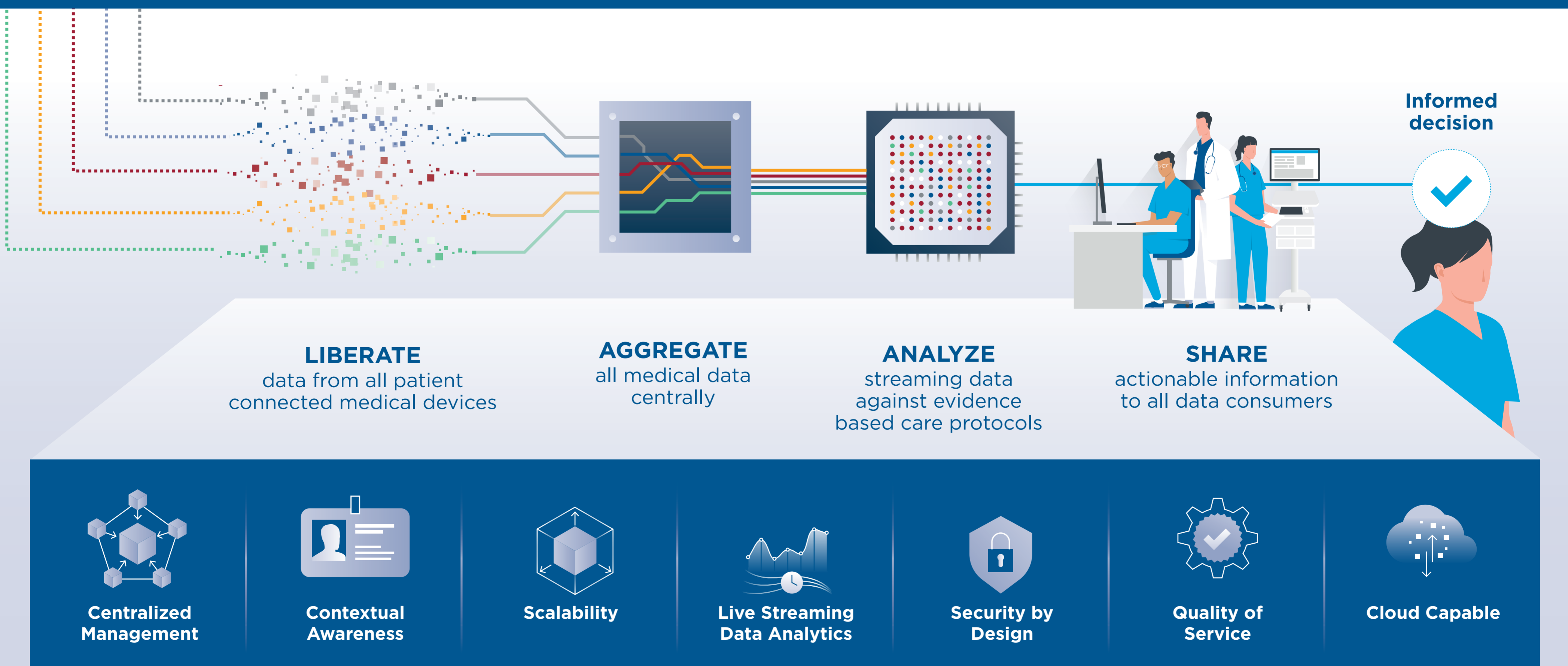
Now imagine a single technology platform helping you achieve these benefits across...

... all hospital departments



... the entire health system

capsule Medical Device Information Platform



One Platform. Countless Benefits. Making the complex simple and the simple insightful.



¹ Ruppel, H; Funk, M; Whittemore, R. Measurement of Physiological Monitor Alarm Accuracy and Clinical Relevance in Intensive Care Units. Am J Crit Care (2018) 27 (1): 11-21. <https://doi.org/10.4037/ajcc2018385>